

MICROZONAZIONE SISMICA

Carta delle velocità delle onde di taglio Vs

1/2



scala 1:10.000

Regione Emilia-Romagna
Comune di Monticelli d'Ongina






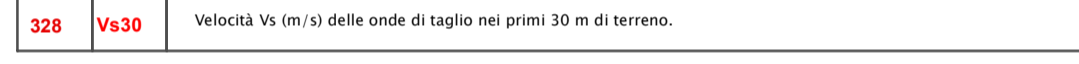
Regione	Soggetto realizzatore	Data
REGIONE EMILIA-ROMAGNA	Dr.Geol. Gabriele Corbelli	Aprile 2025
	Tavola	5.1

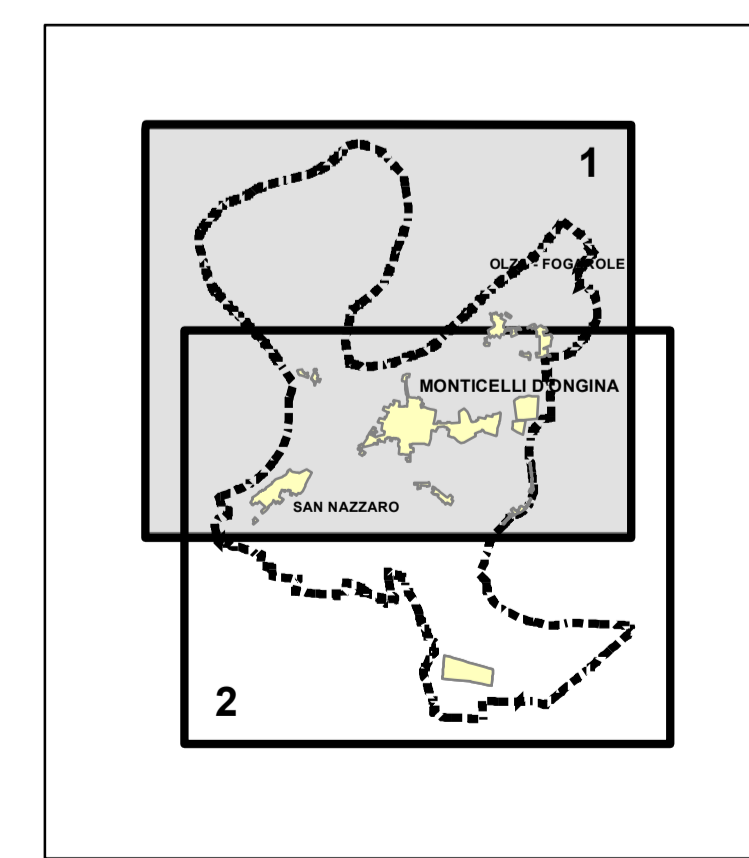
Legenda

 Contorno comunale
 Limite area di studio

Indagini sismiche

 MW MASSE
 RM RSM
 SW SAGGI


 328 1610 Velocità Vs (m/s) delle onde di taglio nei primi 30 m di terreno.



0 250 500 1.000 Metri

